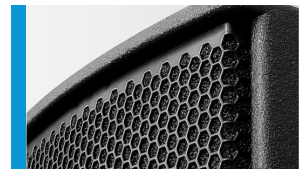




High output universal HiMid system fitted with a classic 2 x 8" Nd / 1" driver combination. Equally suited as a strong top in combination with a subwoofer or as a stand alone system for speech reproduction over short to medium distances. Four M10 mounting points, and a fifth as an optional alternative to the speaker stand socket, in combination with the comprehensive accessory range, allow simple vertical or horizontal mounting.

PRODUCT SPECIFICATIONS

Speaker Components	2 x 8" Nd / 1"
Description	HiMid Sound System
Power AES / Peak	500 W / 1500 W
Impedance nominal	4 Ω (16 Ω optional)
SPL 1 W / Peak @ 1 m	100 dB / 132 dB
Usable Range	80 Hz - 20 kHz (-6 dB)
Tuning Frequency excursion minimum	90 Hz
X - Overpoint acoustical	1,4 kHz
Coverage horizontal / vertical	90° x 60° rotatable
Connectors	2 x Neutrik Speakon NL4MP in/out Coding: 1 +/- HiMid, 2 +/- loop through
Handles	1 x
Rigging / Fittings	4 x M10, 2 x M6 35 mm pole mount
Weight	12,5 kg
Size height x width x depth	59,0 x 25,0 x 25,0 cm
Order No.	00240/ II

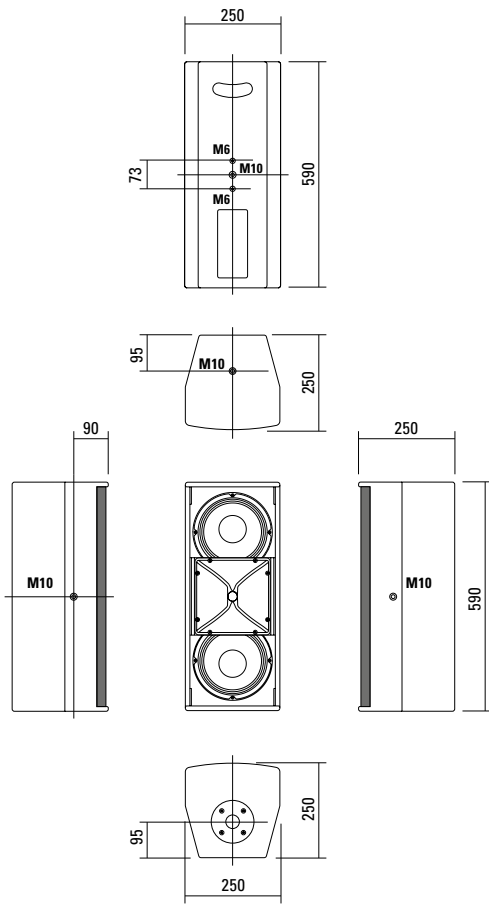


Connection panel with Neutrik Speakon connectors on the rear side.



Ergonomically formed handle slot on the rear side for comfortable transport.

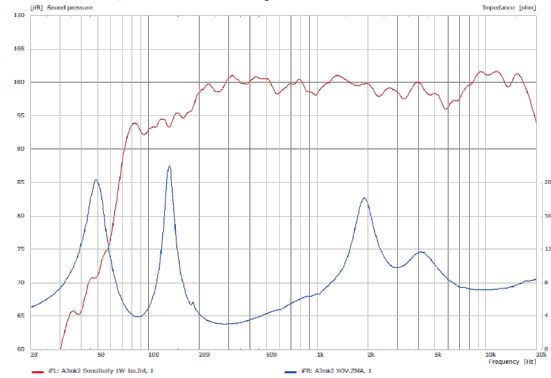
DIMENSIONS



Controller Setups:

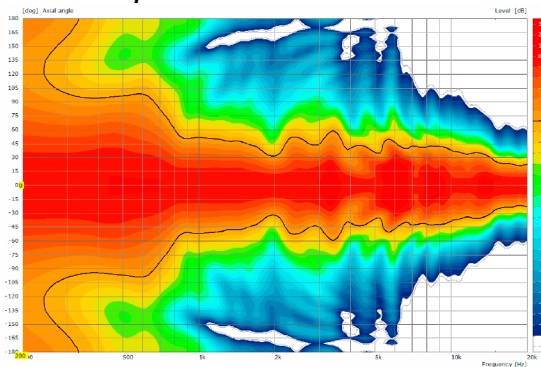
<https://www.seeburg.com/en/downloads>

Sensitivity 1 W @ 1 m + Impedance

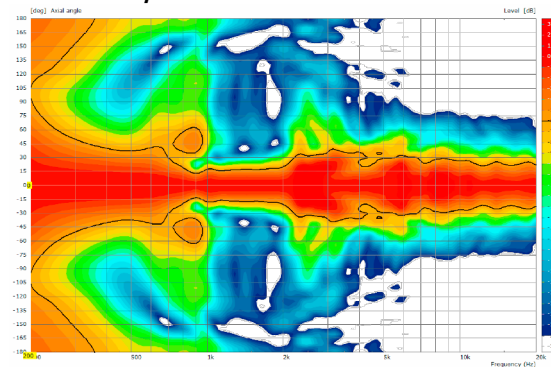


COVERAGE PATTERNS

2D Directivity Plot - horizontal



2D Directivity Plot - vertical



Flying Bracket



for A 3
horizontal alignment,
incl. (2 x M10 x 20 socket head
screws, 2 x rubber washers,
1 x plate)
Order No. **01215/H/set/w** (RAL 9010)
Order No. **01215/H/set**

Flying Bracket



for A 3
incl. (black version: 2 x M10 x 20
ergostyle lobe knob, 2 x rubber washers
white version: 2 x M10 x 20 socket
head screws, 2 x rubber washers)
Order No. **01215/set/w** (RAL 9010)
Order No. **01215/set**

Ergostyle Lobe Knob



for flying brackets, M10 x 20,
with grip, adjustable
Order No. **08171**

Rubber Washer



for flying brackets,
5 mm x 40 mm Ø
Order No. **01206**

Plate



for A 2 / A 3 flying brackets,
horizontal alignment,
replacement for pole mount flange,
110 mm Ø flange with M10 nut
Order No. **08119/M10/w** (RAL 9010)
Order No. **08119/M10**

Flange



with ball and socket joint,
with additional locking screw,
M10 x 15, max. load 15 kg
Order No. **08125**

Flange



35 mm Ø → M10 x 16 mm,
M8 x 20 star knob screw
Order No. **08126**

Truss Clamp



incl. M10 Adapter,
max. load 15 kg
Order No. **01221**

Doughty Quick Trigger Clamp



max. load 250 kg
Order No. **01223**

Steel Safety



6 mm x 600 mm, black,
max. load 22 kg (BGI 810-3),
quick connector undetachably
Order No. **01376/6**

Ring Screw



M10– DIN 580
Order No. **73700** (zincd)
Order No. **73700/sw** (black zincd)

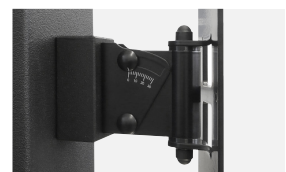
TV Spigot



10 mm internal thread,
28 mm Ø
Order No. **08128**



Flying Bracket, horizontal



Spacer -> Wall Mount

ACCESSORIES A 3

Wall Mount



ball and socket joint flange (08125) + 08125/plate

Order No. **08125/set**

Wall Mount



for U-brackets, max. load 40 kg, incl. screws (M10 x 70 mm socket head screw, M10 hex lock nut and flat washer)

for 8"-12" speakers

Order No. **08130/F269**

Wall Mount



2 x M6 fixing holes (d=73 mm), 1 x M10 fixing hole (center), max. load 25 kg

Order No. **03034**

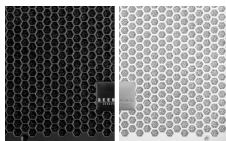
Spacer



for Wall Mount (03034), polyurea coated

Order No. **03034/spc**

Honeycomb Grilles

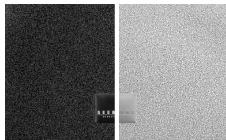


for A 3 front replacement.

Foam behind grille

Order No. **97006/hex/compl**

Order No. **97006/hex/compl/w** (RAL 9010)



Foam in front of grille

Order No. **97006/compl.**

Order No. **97006/compl/w** (RAL 9010)

Speaker Stand



K&M, incl. wind up, height 138,5 to 218 cm, max. load 50 kg,

Order No. **03011**

K&M, height 137,5 to 218,5 cm, max. load 50 kg,

Order No. **03010**

Cover



for A 3, padded

Order No. **01258**

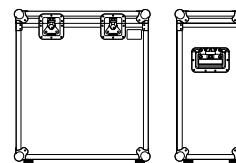
Rain Cover



for A 3

Order No. **01258/outdoor**

Flight Case Trunk



for 2 pcs. A 3 and accessories, standard, 7 mm birch multiplex, PVC coated, hinged lid, 2 x recessed sprung handles, 2 x butterfly catches, 4 x 100 mm blue wheels, 2 pcs. with brake, rubber feet, partition walls, interior lined with felt.

Order No. **16066**

